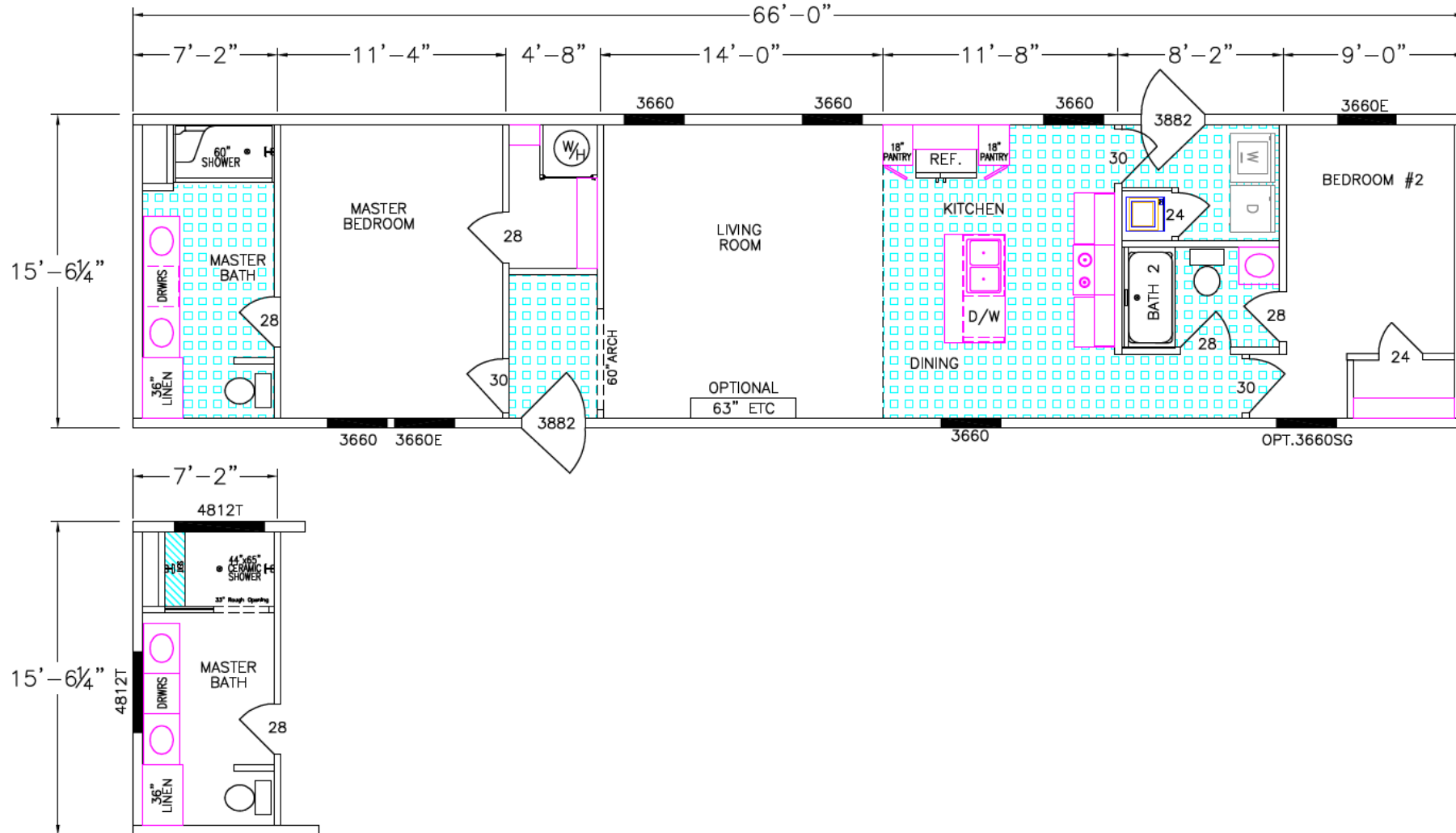


# HOUSTON



409-70-2-16

2 BEDROOM/2 BATH 1025 HSF SF

DUE TO CONTINUOUS PRODUCT IMPROVEMENT, SPECIFICATIONS AND FINISH OPTIONS ARE SUBJECT TO CHANGE WITHOUT NOTICE. THE SQUARE FOOTAGE AND OTHER DIMENSIONS ARE APPROXIMATE. RENDERINGS ARE OFTEN SHOWN WITH OPTIONAL FEATURES AND UPGRADES THAT CAN BE ADDED AT ADDITIONAL COST. PLEASE CONTACT YOUR LOCAL FRANKLIN DEALER FOR FULL DETAILS REGARDING EXTERIOR AND INTERIOR OPTIONS AND PRICING. OVERALL LENGTH INCLUDES 4'0" FOR HITCH.

